

# FOORD FLEX INCOME FUND – CLASS A

The fund aims to achieve high levels of income with some prospects of capital gain from a dynamic mix of listed and unlisted South African fixed interest securities and listed property counters, some select foreign securities and active currency management. The fund is appropriate for investors seeking high income yields with a low probability of capital loss over an investment horizon not exceeding two years. Available as a tax free investment account.

**DOMICILE**  
South Africa

**MANAGEMENT COMPANY**  
Foord Unit Trusts (RF) (Pty) Ltd  
VAT Registration Number: 4560201594

**FUND MANAGERS**  
Farzana Bayat and Rashaad Tayob

**INCEPTION DATE**  
1 October 2022

**BASE CURRENCY**  
South African rands

**CATEGORY**  
South African – Multi Asset – Income

**BENCHMARK**  
110% of Alexander Forbes Short-term  
Fixed-interest Call Deposit Index  
(Stefi Call)

**MINIMUM LUMP SUM / MONTHLY**  
R20 000 / R1 000

**PORTFOLIO SIZE**  
R1.4 billion

**UNIT PRICE**  
1079.65 cents

**NUMBER OF UNITS**  
4.2 million

**LAST DISTRIBUTIONS**  
31/03/2026: 16.69 cents  
31/12/2025: 18.08 cents

**INCOME DISBURSMENTS**  
End-March, end-June, end-September  
and end-December each year.

**INCOME CHARACTERISTICS**  
High income yield, expected to exceed  
average money market yields.

**PORTFOLIO ORIENTATION**  
A dynamic mix of listed and unlisted SA  
fixed interest securities and listed property  
counters, with some select foreign  
securities and active currency  
management. Weighted average duration  
is typically less than three years.

**SIGNIFICANT RESTRICTIONS**  
Maximum equity exposure of 10%;  
maximum property exposure of 25%;  
maximum offshore exposure of 45%;  
complies with pension fund investment  
regulations (Regulation 28).

**FOREIGN ASSETS**  
Direct investment in global hard-currency  
securities, with active currency  
management.

**RISK OF LOSS**  
Low in periods longer than one year,  
moderate in periods shorter than six  
months.

**TIME HORIZON**  
One to two years.

**ISIN NUMBER**  
ZAE000313524

## PORTFOLIO STRUCTURE % Change since 31 December 2025

	SA	FOREIGN	TOTAL	CHANGE
Cash and call	-5	2	-3	▼ 0.2
Money market	38	-	38	▼ 9.4
Floating rate notes	27	-	27	▲ 1.8
Fixed rate bonds	6	-	6	▲ 5.8
Fixed rate NCDs	-	-	-	-
Inflation linked bonds	21	6	27	▲ 1.2
Preference shares	-	-	-	▲ 0.0
Convertible bonds	-	2	2	▲ 0.3
Property	3	-	3	▲ 0.6
Equity	-	-	-	-
<b>TOTAL</b>	<b>90</b>	<b>10</b>	<b>100</b>	
<b>Foreign currency hedge</b>		(6)		
<b>Foreign currency exposure</b>		<b>4</b>		

## PORTFOLIO STATISTICS

Yield <sup>1</sup>	8.75%
Spread to JIBAR	1.99%
<b>SA duration<sup>2</sup></b>	<b>0.93</b>
– SA fixed rate duration	0.25
– SA floating rate duration	0.09
– SA inflation linked duration	0.58
<b>Offshore duration<sup>2</sup></b>	<b>0.19</b>
– Offshore fixed rate duration	0.03
– Offshore inflation linked	0.16

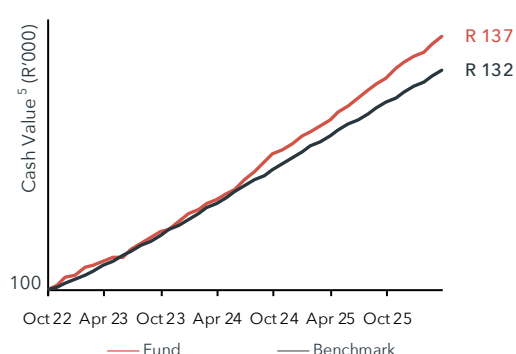
## MATURITY SPREAD %

0–1 years	40
1–3 years	35
3–7 years	24
7–12 years	1
> 12 years	-
Perpetual	-

## CREDIT EXPOSURE BREAKDOWN %

RATING <sup>4</sup>	%	SECTOR	%
F1+	41	Big four banks	37
F1	-	SA Corporates	10
AAA	46	SA Government	45
AA	10	US Government	6
A	-	Other	2
Other	3		
<b>TOTAL</b>	<b>100</b>	<b>TOTAL</b>	<b>100</b>

## PORTFOLIO VS BENCHMARK



## PORTFOLIO PERFORMANCE % (PERIODS GREATER THAN ONE YEAR ARE ANNUALISED<sup>6</sup>)

	CASH VALUE <sup>5</sup>	SINCE INCEPTION	3 YEARS	1 YEAR	6 MONTHS	3 MONTHS	YTD	THIS MONTH
Fund <sup>7</sup>	R 137,269	9.5	9.6	9.8	4.5	2.2	2.2	0.8
Benchmark	R 132,284	8.3	8.5	7.8	3.7	1.8	1.8	0.6
Fund highest <sup>7,8</sup>		11.0	11.0	9.8				
Fund lowest <sup>7,8</sup>		7.6	8.5	9.8				

\*Please refer footnotes overleaf.

## IMPORTANT INFORMATION FOR INVESTORS

Foord Unit Trusts (RF) (Pty) Ltd (Foord) is an approved CISC Management Company (#10), regulated by the Financial Sector Conduct Authority. Portfolios are managed by Foord Asset Management (Pty) Ltd, an authorised Financial Services Provider (FSP: 578). The custodian/trustee of Foord Unit Trusts is RMB Custody and Trustee Services (a division of FirstRand Bank Limited), contactable on T: 087 736 1732, F: 0860 557 774, www.rmb.co.za.

Collective Investment Schemes in Securities (unit trusts) are generally medium- to long-term investments. The value of participatory interests (units) may go down as well as up and past performance is not necessarily a guide to the future. Performance is calculated for the portfolio. Individual investor performance may differ as a result of the actual investment date, the date of reinvestment and withholding taxes. Performance may be affected by changes in the market or economic conditions and legal, regulatory and tax requirements. Foord does not provide any guarantee either with respect to the capital or the performance return of the investment. Unit trusts are traded at ruling prices and can engage in borrowing. Foord does not engage in scrip lending. Commission and incentives may be paid and if so, this cost is not borne by the investor. A schedule of fees and charges and maximum commissions is available on request. Distributions may be subject to mandatory withholding taxes. Portfolio information is presented using effective exposures. A fund of funds invests only in other Collective Investment Scheme portfolios, which may levy their own charges, which could result in a higher fee structure. A feeder fund is a portfolio that, apart from assets in liquid form, consists solely of units in a single portfolio of a Collective Investment Scheme which could result in a higher fee structure. Foord is authorised to close the portfolio to new investors in order to manage the portfolio more efficiently in accordance with its mandate.

Unit trust prices are calculated on a net asset value basis, which is the total value of all assets in the portfolio including any income accruals and less any permissible deductions from the portfolio. Forward pricing is used. Prices are determined at 15h00 each business day and are published daily on www.foord.co.za. The cut-off time for instruction is 14h00 each business day.

The portfolio may include underlying foreign investments. Fluctuations or movements in exchange rates may cause the value of underlying foreign investments to go up or down. The underlying foreign investments may be adversely affected by political instability as well as exchange controls, changes in taxation, foreign investment policies, restrictions on repatriation of investments and other restrictions and controls that may be imposed by the relevant authorities in the relevant countries.

This document is not an advertisement, but is provided exclusively for information purposes and is not an offer or solicitation to purchase, sell or otherwise deal with any particular investment. Economic forecasts and predictions are based on Foord's interpretation of current factual information and exploration of economic activity based on expectation for future growth under normal economic conditions, not dissimilar to previous cycles. Forecasts and commentaries are provided for information purposes only and are not guaranteed to occur. While we have taken and will continue to take care that the information contained herein is true and correct, we request that you report any errors to Foord at unittrusts@foord.co.za. The document is protected by copyright and may not be altered without prior written consent.

Foord Asset Management is a member of the Association for Savings and Investment SA.

This is a Minimum Disclosure Document.

Additional detailed analysis is published in the Quarterly Portfolio Report available on www.foord.co.za.

Published on 07 April 2026.

### MONTHLY PERFORMANCE %

	JAN	FEB	MAR	APR	MAY	JUN	JUL	AUG	SEP	OCT	NOV	DEC	YTD
2022										0.75	1.16	0.35	2.3
2023	1.17	0.08	0.65	0.65	-0.01	1.07	0.72	0.87	0.84	0.29	1.11	0.98	8.7
2024	0.68	0.63	0.46	0.80	0.54	1.35	0.97	1.26	1.01	0.55	0.75	0.84	10.3
2025	0.56	0.73	0.60	0.94	0.82	0.82	0.93	0.79	0.65	1.06	0.68	0.52	9.5
2026	0.63	0.77	0.79										2.2

### FEE RATES

Initial, exit and switching fees	0.0%
Manager's charge	0.5% plus VAT

### TOTAL INVESTMENT CHARGE %

	12 MONTHS	36 MONTHS
Total expense ratio (TER)	0.60	0.62
– Manager's charge (basic)	0.50	0.50
– VAT and sundry costs	0.10	0.12
Transaction costs (incl VAT)	0.02	0.01
<b>Total investment charge</b>	<b>0.62</b>	<b>0.63</b>

A TER is a measure of a portfolio's annual expenses, fees and charges, expressed as a percentage of the average daily value of the portfolio. These expenses include the annual fee, VAT, audit fees, bank charges and costs (excluding trading costs) incurred in any underlying funds. Included in the TER, but separately disclosed, is a performance fee (or credit) resulting from overperformance (or underperformance) against the benchmark. A higher TER does not necessarily imply a poor return, nor does a low TER imply a good return. The current TER cannot be regarded as an indication of future TERs. Performance return information and prices are always stated net of the expenses, fees and charges included in the TER. The TER for the fund's financial year ended 31 March 2025 was 0.62%

<sup>1</sup> The yield for an interest bearing security is its annual income divided by its current price expressed as a percentage. For the fund, the yield is a weighted average yield of all underlying interest bearing securities as at the last day of the month. It is subject to change as market rates and underlying investments change.

<sup>2</sup> Duration is the measure of the sensitivity of the price of the instrument to a change in interest rates, with a smaller number indicating less sensitivity and a larger number indicating more sensitivity.

<sup>3</sup> Treasury inflation-protected securities.

<sup>4</sup> Average credit rating from rating agencies.

<sup>5</sup> Current value of R100 000 notional lump sum invested at inception, distributions reinvested (graphically represented in R'000s above)

<sup>6</sup> Converted to reflect the average yearly return for each period presented.

<sup>7</sup> Net of fees and expenses.

<sup>8</sup> Highest and lowest actual 12 month rand return achieved in the period.

Note: Totals may not cast perfectly due to rounding.

Please visit our website for more information regarding our investment track record, the Foord team, current and archived news items, or forms and documents.

This information is provided free of charge.

T. +27 21 532 6969  
E. unittrusts@foord.co.za  
www.foord.co.za

